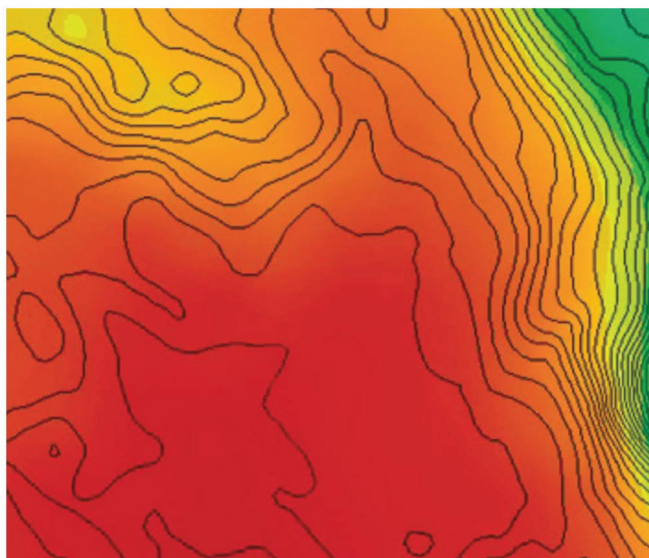


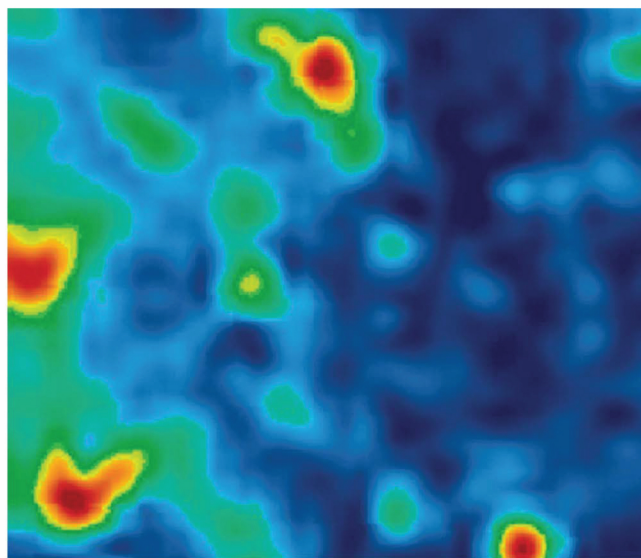
MZB® LITE ZONE MAP

Fields are zoned with up to five management zones, creating a MZB® Lite Zone Map.

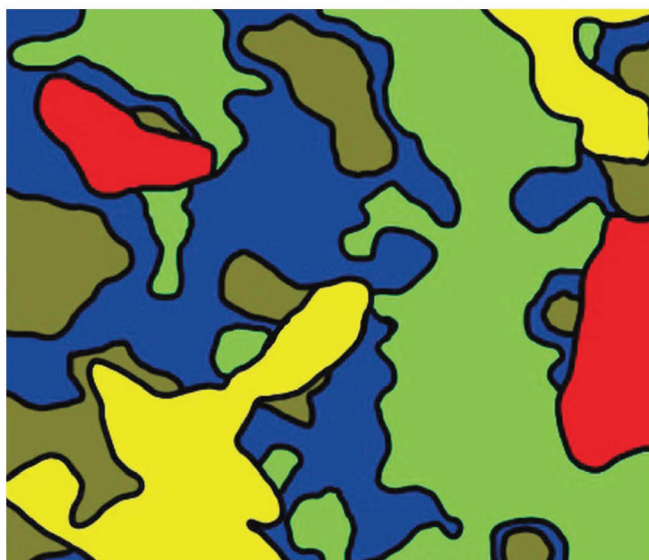
MZB® Lite maps may include two topography zones (Zone 1, 2 or 3) and low, medium or high yield-potential zones (Zones 5, 8 or 11). Elevation and a yield-potential layer are used to create the management zones. The yield-potential layer is established using satellite imagery or yield data. Elevation data may be derived from LiDAR, which is an optical remote sensing technology.



RTK ELEVATION



GNDVI SATELLITE IMAGE



LITE ZONE MAP

MZB® Lite Zone Map Descriptions

- 1** Hilltop, Ridge or High-sloping Area
- 2** High-producing Depression
- 3** Low to Medium-producing Depression
- 5** Low Yield Potential
- 8** Medium Yield Potential
- 11** High Yield Potential